

---

# Late Laxmibai Deshmukh Mahila Mahavidyalaya, Parli Vaijnath

## Feedback Analysis 2022-23

National Assessment and Accreditation Council (NAAC)

Student Satisfaction Survey

Key Indicator – 1.4.1

Under Criterion I - Curricular Aspects

### Guidelines for Students

NAAC (National Assessment and accreditation council) is conducting a Student Satisfaction Survey regarding Teaching – Learning and Evaluation, which will help to upgrade the quality in higher education. A student will have to respond to all the questions given in the following format with her/his sincere effort and thought. Her/his identity will not be revealed.

A) Please confirm this is the first and only time you answer this survey.

a) Yes                       b) No

B) Age:                      C) College Name:

D) Gender:    a) Female     b) Male                       c) Transgender

E) What degree program are you pursuing now?

a) Bachelor's                       b) Master's                       c) MPhil   
d) Doctorate                       e) Other (                      )

F) What subject area are you currently pursuing?

a) Arts                       b) Commerce                       c) Science   
d) Professional                       e) Other: (                      )

### Instructions to fill the questionnaire

- All questions should be compulsorily attempted.
- Each question has five responses, choose the most appropriate one.
- The response to the qualitative question no. 21 is student's opportunity to give suggestions or improvements; she/he can also mention weaknesses of the institute here. (Kindly restrict your response to teaching learning process only)

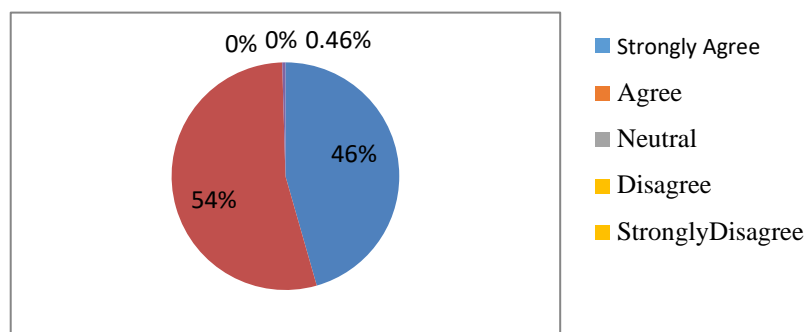
## Criterion I - Curricular Aspects

### Student Satisfaction Survey on Teaching Learning Process

Following are questions for online student satisfaction survey regarding teaching learning process.

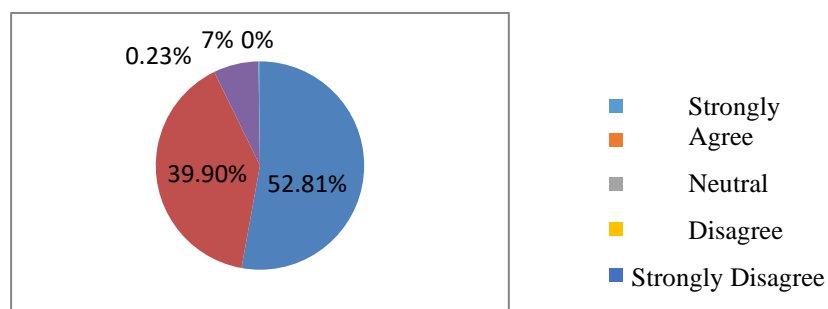
#### 1. Has the teacher covered entire syllabus as prescribed by university?

Particulars	Percentage
Strongly Agree	45.77%
Agree	54.22%
Neutral	00%
Disagree	0.46%
Strongly Disagree	00%
<b>Grand Total</b>	<b>100%</b>



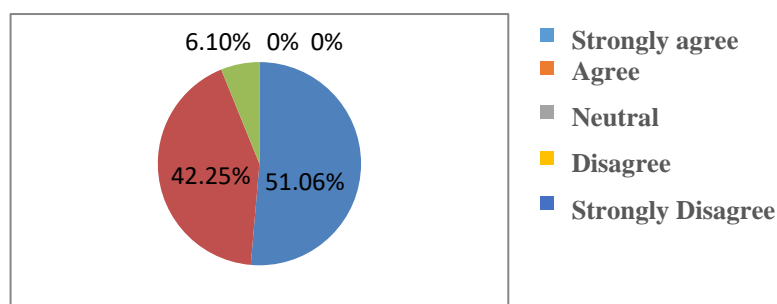
#### 2. Has the teacher covered relevant topics beyond syllabus?

Particulars	Percentage
Strongly Agree	52.81%
Agree	39.90%
Neutral	00%
Disagree	7.00%
Strongly Disagree	00.23%
<b>Grand Total</b>	<b>99.94%</b>



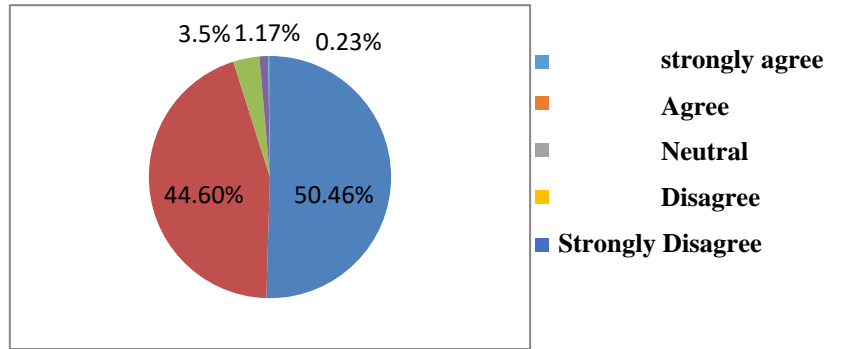
#### 3. Effectiveness of teacher in terms of ?

Particulars	Percentage
Strongly Agree	51.06%
Agree	42.25%
Neutral	6.10%
Disagree	00%
Strongly Disagree	00%
<b>Grand Total</b>	<b>99.95%</b>



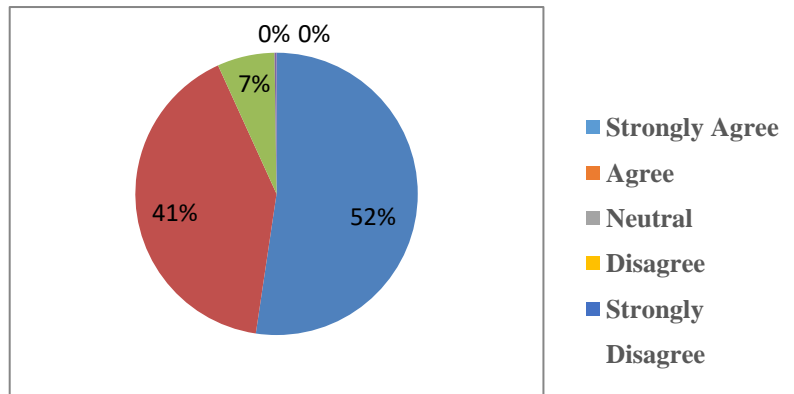
#### 4. Communication skills

Particulars	Percentage
Strongly Agree	50.46%
Agree	44.60%
Neutral	3.5%
Disagree	1.17%
Strongly Disagree	0.23%
<b>Grand Total</b>	<b>99.96%</b>



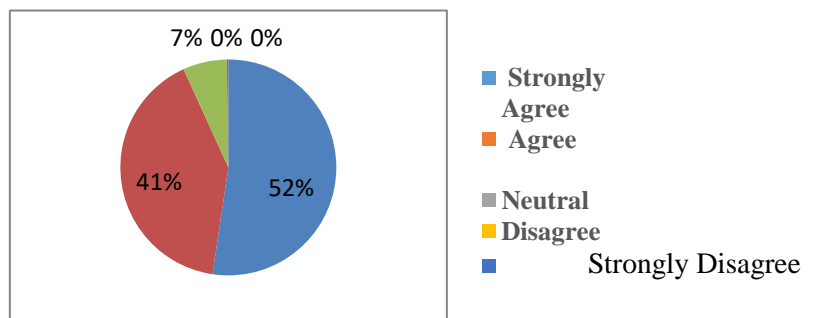
#### 5. Use of audio visual aids

Particulars	Percentage
Strongly Agree	51.64%
Agree	44.60%
Neutral	3.28%
Disagree	0.46%
Strongly Disagree	00%
<b>Grand Total</b>	<b>99.98%</b>



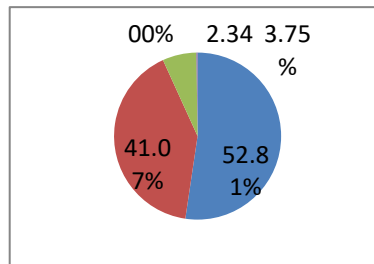
#### 6. Availability beyond normal classes and co-operation to solve individual problems

Particulars	Percentage
Strongly Agree	53.99%
Agree	42.25%
Neutral	3.05%
Disagree	0.23%
Strongly Disagree	00%
<b>Grand Total</b>	<b>99.52%</b>



## 7. Overall effectiveness

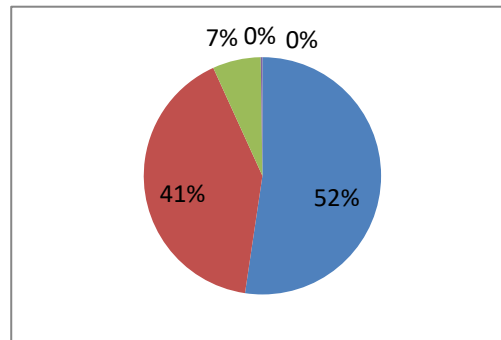
Particulars	Percentage
Strongly Agree	52.81%
Agree	41.07%
Neutral	3.75%
Disagree	2.34%
Strongly Disagree	00%
<b>Grand Total</b>	<b>99.97%</b>




- Strongly agree
- Agree
- Neutral
- Disagree
- Strongly Disagree

## 8. How do you rate the lab facilities , if Applicable ?

Particulars	Percentage
Strongly Agree	52.81%
Agree	41.07%
Neutral	3.75%
Disagree	2.34%
Strongly Disagree	00%
<b>Grand Total</b>	<b>99.97%</b>



- Strongly agree
- Agree
- Neutral
- Disagree
- Strongly Disagree

  
**Principal**  
 Late Laxmibai Deshmukh  
 Mahila Mahavidyalaya  
 Parli-Vaijanth. Dist. Beed.

